



GAT MONTHLY MEMBERSHIP PROGRESS REPORT

Results as of: 4/30/2023

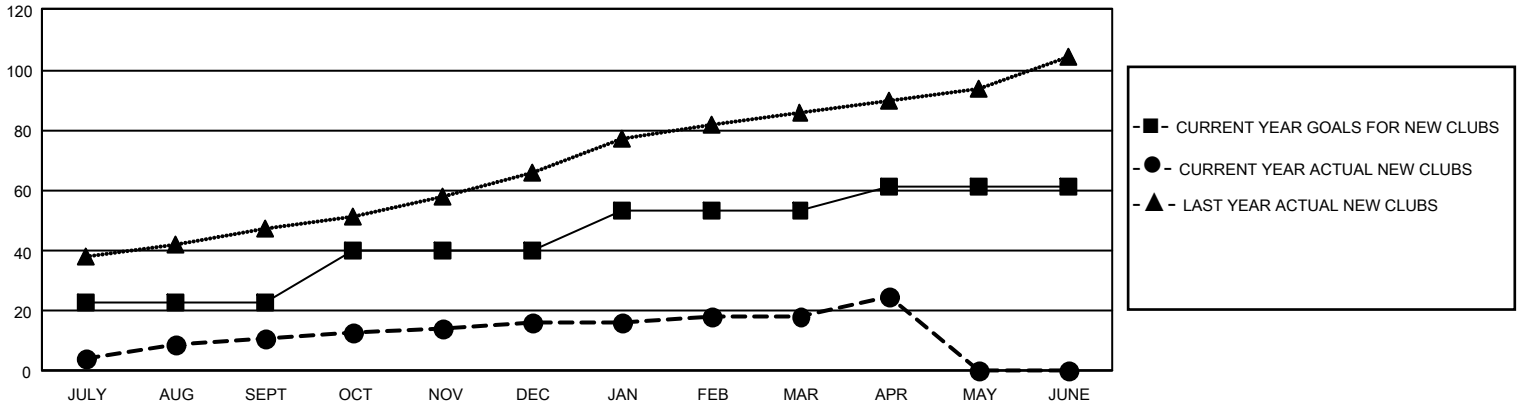
GMT Constitutional Area 6, Group J

REPORT DOES NOT INCLUDE CLUBS IN UNDISTRICTED AREAS.

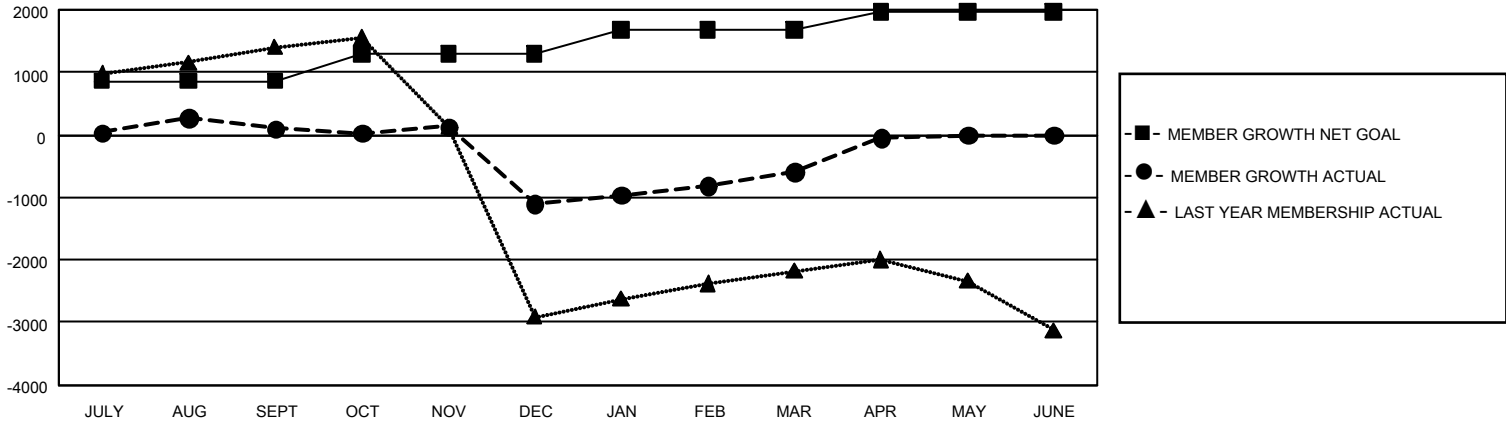
Clubs			
RESULTS FOR 2022-2023			
QUARTER	NEW CLUB GOAL	NEW CLUBS	DROPPED CLUBS
JULY/AUG/SEPT	69	11	103
OCT/NOV/DEC	51	5	21
JAN/FEB/MAR	39	2	37
APR/MAY/JUNE	24	7	2

Members			
RESULTS FOR 2022-2023			
QUARTER	MEMBER GROWTH NET GOAL	MEMBER GROWTH ACTUAL	DROPPED MEMBERS ACTUAL (including transfers)
JULY/AUG/SEPT	860	1,077	872
OCT/NOV/DEC	435	995	2,106
JAN/FEB/MAR	385	1,009	301
APR/MAY/JUNE	285	861	198

GOALS AND ACTUAL NEW CLUBS CUMULATIVE



GOALS AND ACTUAL MEMBERS CUMULATIVE



DROPPED CLUBS: 163	463 CLUBS OF 950 ADDED 1 OR MORE NEW MEMBERS	GENDER DISTRIBUTION	
		MALE 17,967 (62.00%)	FEMALE 11,006 (37.98%)
DROPPED MEMBERS		NON BINARY 0 (0.00%)	PREFER NOT TO ANSWER 5 (0.02%)
DECEASED 73	CLICK HERE FOR CUMULATIVE MEMBERSHIP DATA	TOTAL FAMILY UNIT MEMBERS 19,265	
CLUB CANCELLED 500		FAMILY MEMBERS PAYING HALF DUES 12,350	
OTHER 2,904			
TOTAL 3,477			